



Offering **trusted, reliable, and affordable biometric solutions** that are **safe, easy to deploy, and upgradeable** with minimal cost

Building Impactful Opportunities for Quality, Universal, Biometric Empowerment

Creating solutions that **impact** lives at the **grassroots** level

AgriGov Unified Digital Agricultural Platform

World's First, US Patented, **Web 3.0 enablement ready, AI Powered**

Multi-factor, Multimodal, Decentralized Biometric-Identity management Platform with Live Data Analytics



Mr. Subodh Narayan Agrawal
Founder

After experiencing sophisticated digital fraud first-hand, Mr. Subodh Narayan Agrawal founded BioQube in 2018, making it his mission to combat identity fraud globally through cutting-edge biometric solutions.

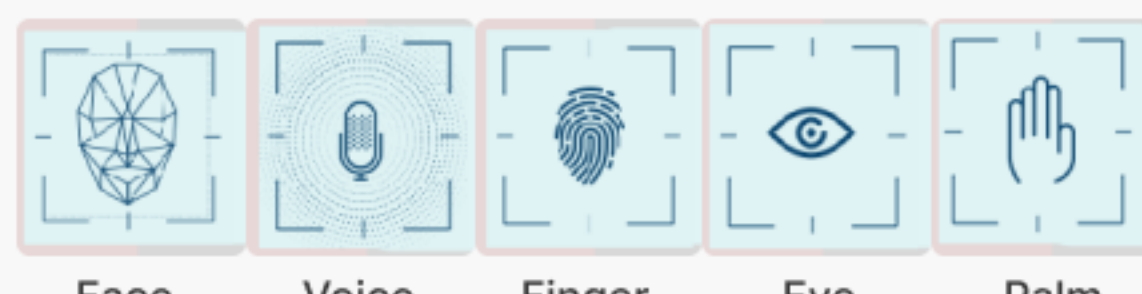


Feature	Problems	Solution by Bioqube	Our Competitive Edge
Biometric Modalities	Single – Factor : Face only or finger (using device)	Multi Factor Authentication (Face, finger, Voice, eyes & Palm)	Face : 1: N, 1:1 Match @ 26 ms in a 20 Million Records in cloud
Hardware Requirements	Fragmented hardware solutions: Specialised & Costly hardware , can't communicate instantaneously with global Databases	Mobile fist technology. Mobile Tablet/ IP Camera - Based, No additional Hardware needed WEB 3 Enabled	No Spares/inventory required Leverage Mobile Technology advancement
Cost and Accessibility	Expensive, Urban Centric, slow deployment	Affordable, grassroots-focused, leverages Mobiles/ tablets innovation	Leverage existing Infra (IP camera), individual's mobile
Security measures	Security vulnerability Basic encryption, no decentralised data OTP & Password dependent to complete end-to –end process	Decentralized Data security with AES 256 Encryption, data stored in customer's Cloud	Patented Technology - Distributed architecture for Multi-factor authentication, Local AI deployment –Online & Offline
Scalability	Limited scope, Expensive, Time consuming and difficult to upgrade/ replace	Empowering users: Highly Scalable across Diverse environment	Quick deployment via app , AI model works both Offline and Online, Deduplication check – on Device & in cloud



Mobile/Tablet

+



Face

Voice

Finger

Eye

Palm

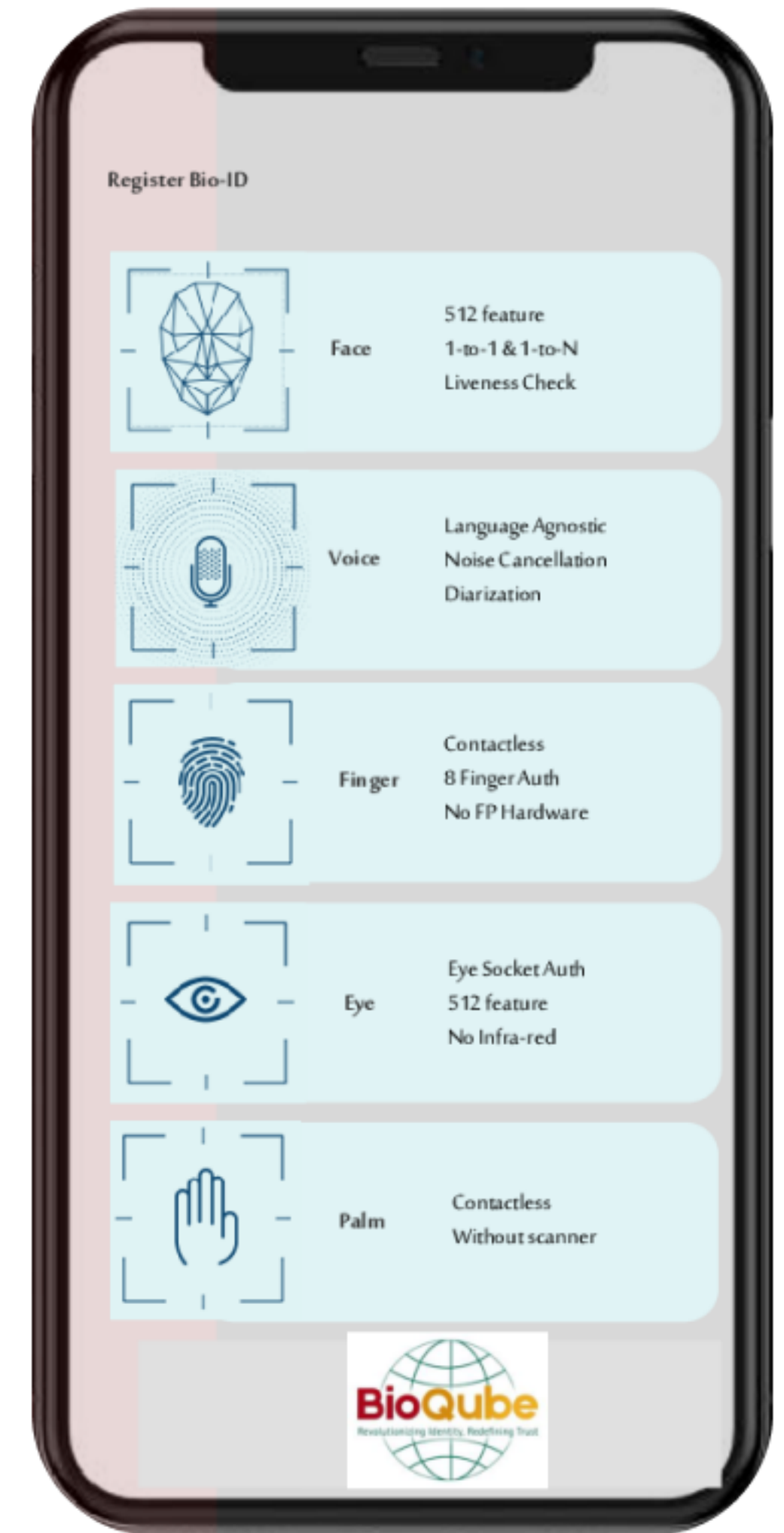
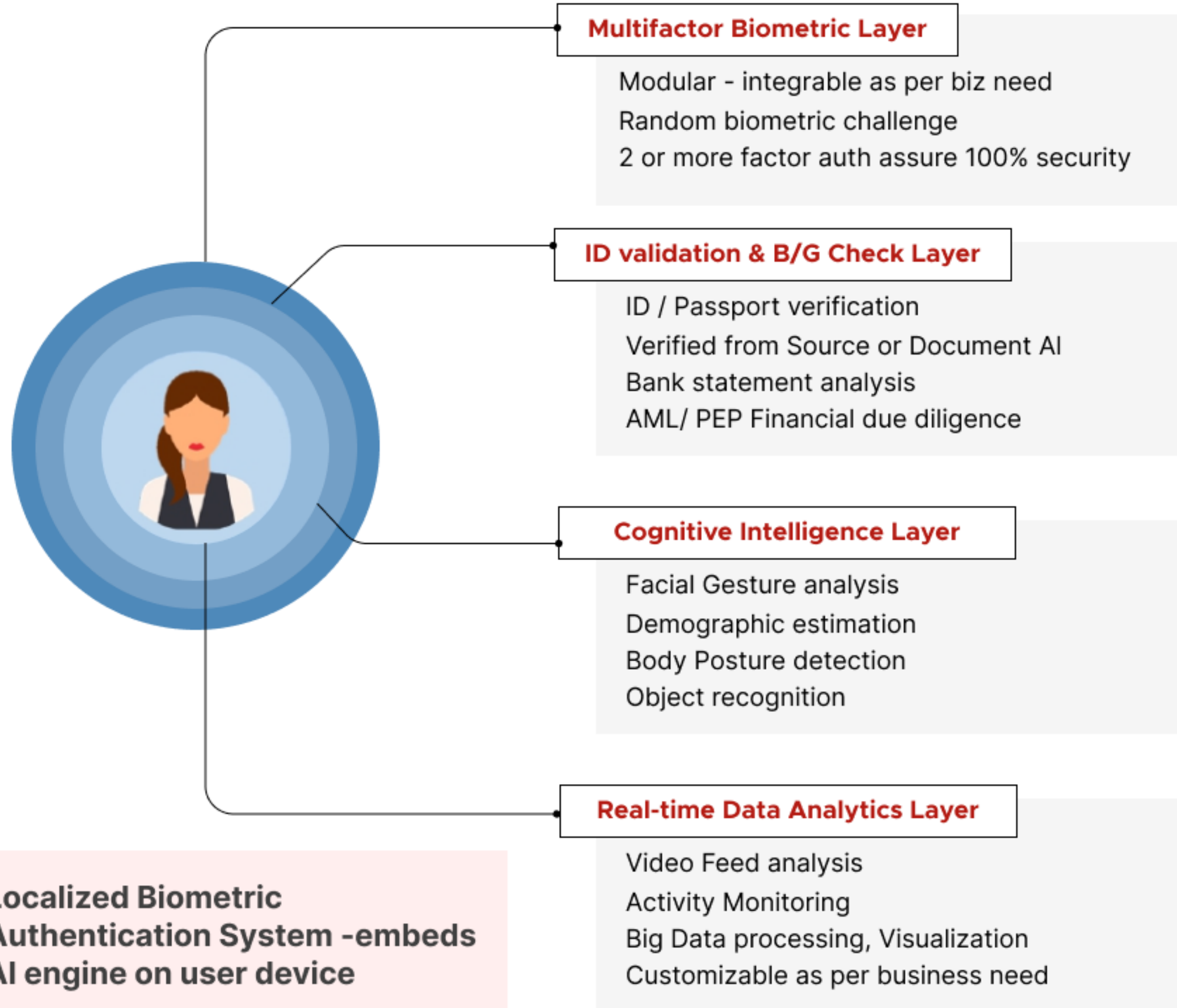
+

- Web3 Enabled
- Unique, Distributed Data Architecture

Core Technology

Your Biometric is your Identity, Web 3 Enabled

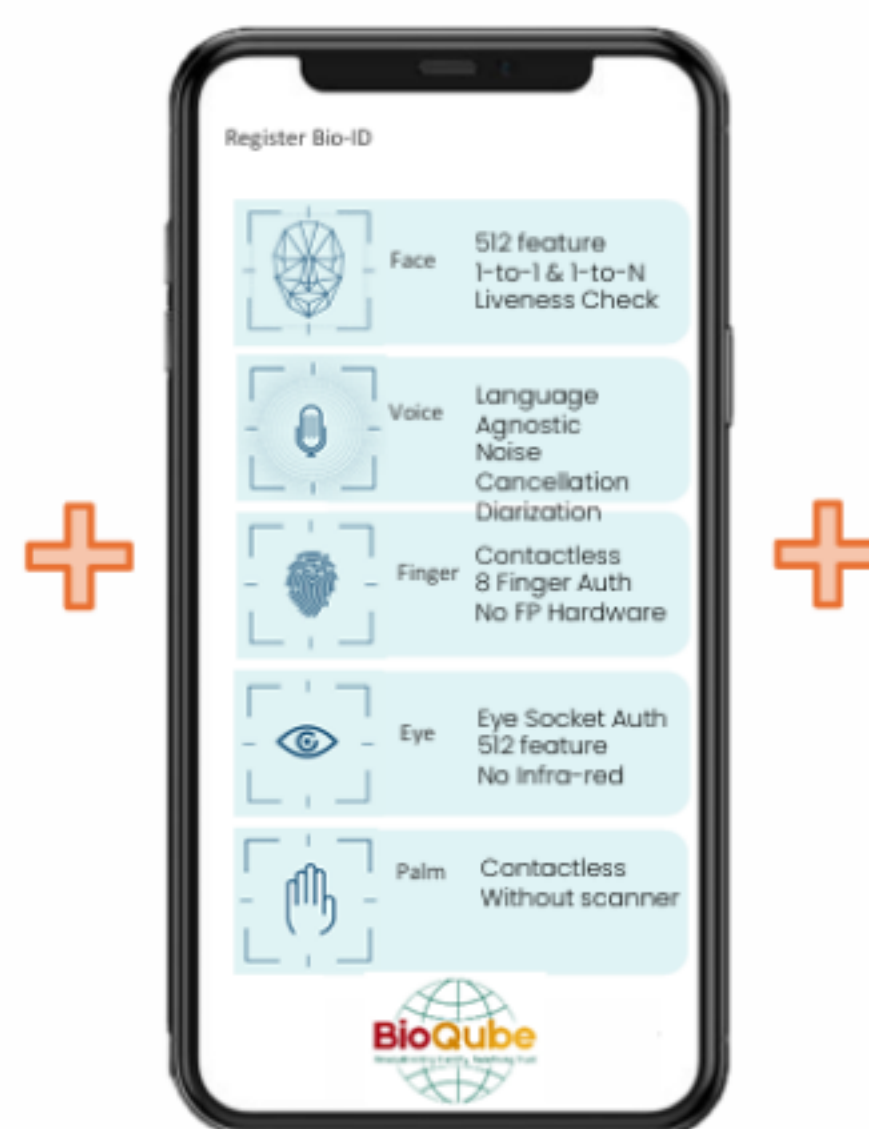
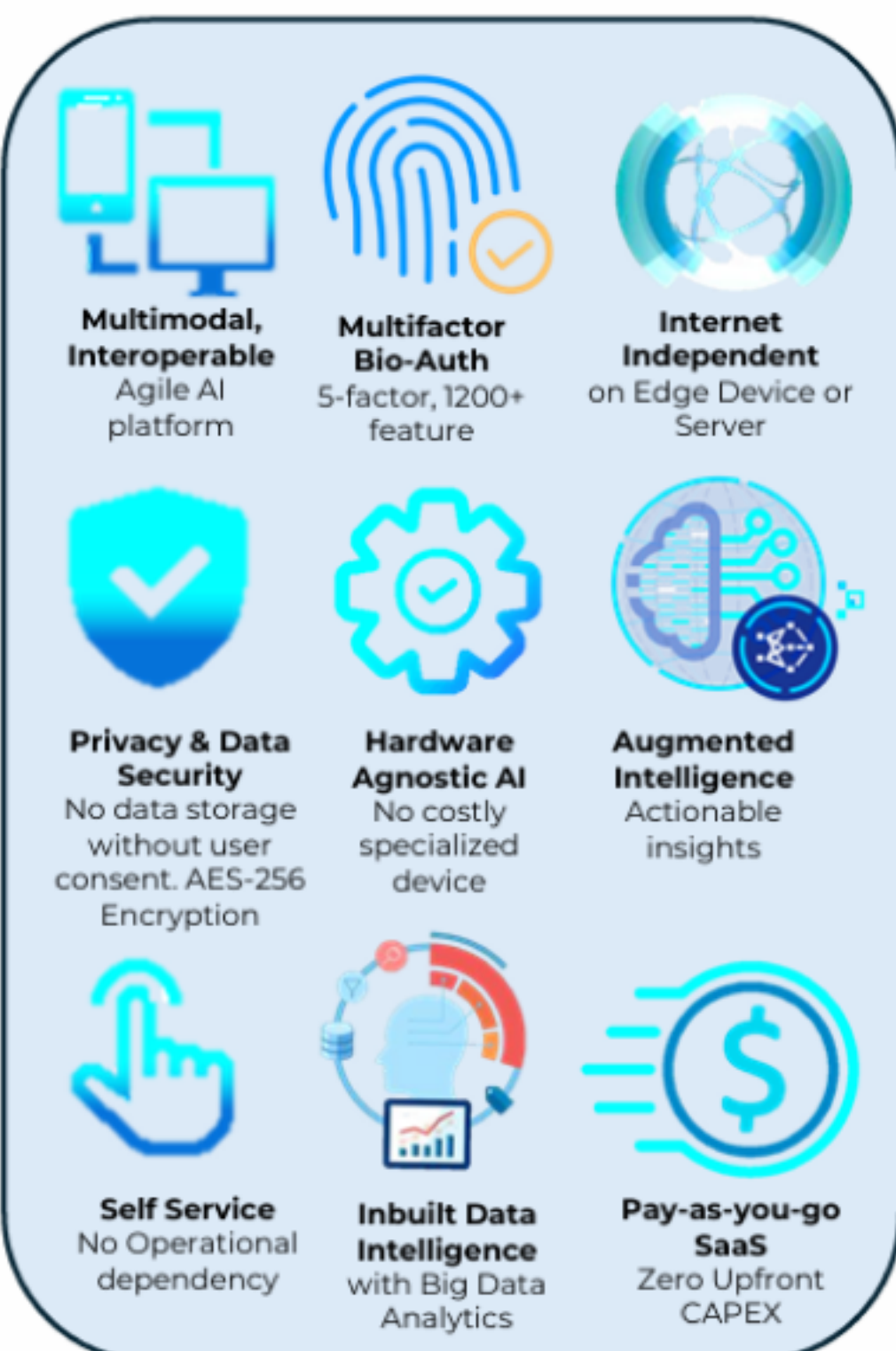
A Patented decentralized data architecture which reduces risk of hacking



Localized Biometric Authentication System - embeds AI engine on user device
+ 3 More applied

Solution Architecture

Deployable both
Offline & Online



No Specialised Hardware

Deployable using any
mobile/tablet

+
Interpretable with legacy
system

&

**Military grade
data protection**
AES 256+decentralized data
structure



Geo-Fenced

- Contact Less
- No Specialized Hardware



Integrated, biometric-driven digital platform that transforms agricultural governance by enabling seamless identification, authentication, and support delivery to farmers.

The platform uses multimodal biometrics like voice and facial recognition to create tamper-proof, verifiable farmer identities, replacing paper-based and manual verification.



Bioqube Focus: Secure & Productive Farming

Key Challenges



No Unified Platform for Farmers



Challenges in Insurance and Credit mechanism



Lack of Monitoring Mechanisms



Limited Warehousing facility

BioQube’s Value addition



Self Service Verified Onboarding with Biometric & Document Integration



Paperless Loan / Insurance Application with Identity Verification



Continuous Monitoring of User Financial Health Through Closed Loop Merchant & Correspondent Network



Linking Produce Storage at Warehouse with Farmer Bio-ID – Blockchain Enablement in Future



Bio-auth Zero Fraud Subsidy & Benefit Transfer at Each Point Of Distribution

End-To-End Farmer Financial Lifecycle Manage

UNIQUE DIGITAL ID & FARMER KYC
Each Farmer Is Onboarded Onto A Digital Platform – A Unique Digital ID Is Issued Linked With Farmer Biometrics & Legal ID.



UNIFIED
AI
ENABLED
DIGITAL
PLATFORM

ADVISORY & FEEDBACK
Feedback On The Weather, Crop Recommendation Based On The Output.



AI ENABLED HARVEST MONITORING
Future Roadmap For AI & IoT Enabled Harvest Monitoring On Each Farmer’s Land & Tag Them With Farmer Identity & Credit Profile.



GOV. SUBSIDY & BENEFITS
Farmers Are Handed Over Seeds, Fertilizers, Pesticides Etc. & Monetary Subsidies With Identity Verification – Zero Pilferage.



LOAN & EQUIPMENT MONITORING
A Unique QR Code Tagged With Farmer’s Bio ID For Easy Monitoring In Warehouses Too.



SEEDS & FARM EQUIPMENT CREDIT FINANCING
Comprehensive Farmer Profiling For Bio-Auth Based Loan Disbursement & Monitoring System With Tagged Farmer Identity.



FARMER & CROP INSURANCE
Integrated Crop Insurance & Other Special Insurance Plans For The Farmers & Their Family Members.

Transforming Agricultural Governance



Outcomes

- Unified Data Framework
- Resource Optimization
- Dynamic Decision Support
- Fraud Reduction
- Productivity Scoring



Impact On Farmers

- Frictionless Access
- Financial Inclusion
- Digital Empowerment
- Reduced Bureaucracy
- Merit-Based Support



Impact On Government

- Enhanced Transparency
- Resource Efficiency
- Strategic Planning
- Rural Digitization
- Sustainable Development

AgriGOV: Disruption & Data Benefits

What Makes AgriGOV Disruptive

AgriGOV replaces paper-based verification with biometric ID, functions offline in rural areas, shifts to predictive governance, integrates biometrics, mobile, IoT, and satellite data, and supports the full agricultural lifecycle.



Data-Driven Government Benefits

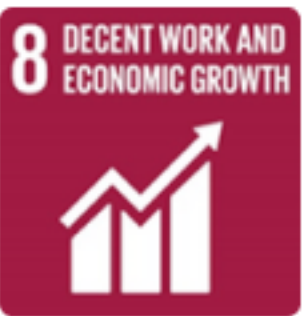
AgriGOV enables precise input targeting, continuous policy feedback, regional performance visibility, holistic planning across sectors, and measurable progress toward sustainability goals.

Farmer Sentiment Impact

AgriGOV fosters trust through transparency, reduces paperwork with a single biometric ID, empowers farmers with data access, restores dignity by removing queues, and prepares them for modern agri-value chains.



Aligned with 9 UN SDG goals



NIST



Advisory Board

Steven Morgan

Ex-Global Head Tech Ops, Citibank

Capt. Harpreet Chadha

Advisory Board - California Sheriff Dept.

Anil Ahuja

Former Asia head of 3i

Rakesh Asthana

Former special director CBI, Director General BSF, Director General NCB

Himanshu Gulati

Member of Parliament, Norway

Brian Steven Hughes

VP- Active Security Consulting, Former President-Lupo Global Former Political Director for U.S. Congressional elections

Roll Stephane

Chairperson, African Union Economic Council

Rene BruelHart

Former President of the Board of Directors of the Financial Information Authority (AIF) of Vatican City

Ahmed Kassam

Advisory to NEPAD e-Africa Commission, UNDP, UNICEF, UNESCO, Commonwealth Biz Council, World Bank, WEF

Saumen Chakraborty

30Y exp. - IBM, Microsoft

Gaurav Dalmia

Chairman, Dalmia Holding