



Offering **trusted, reliable, and affordable biometric solutions** that are **safe, easy to deploy, and upgradeable** with minimal cost

Building Impactful Opportunities for Quality, Universal, Biometric Empowerment

Creating solutions that **impact** lives at the **grassroots** level

IDenTrip Unified Digital Passenger Journey Platform

World's First, US Patented, **Web 3.0 enablement ready, AI Powered**

Multi-factor, Multimodal, Decentralized Biometric-Identity management Platform with Live Data Analytics



Mr. Subodh Narayan Agrawal
Founder

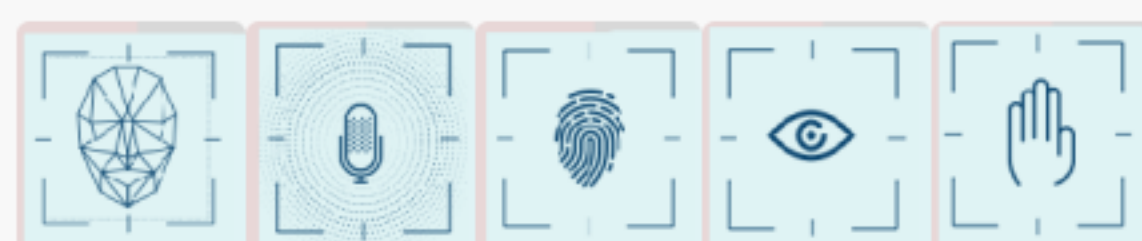
After experiencing sophisticated digital fraud first-hand, Mr. Subodh Narayan Agrawal founded BioQube in 2018, making it his mission to combat identity fraud globally through cutting-edge biometric solutions.



Feature	Problems	Solution by Bioqube	Our Competitive Edge
Biometric Modalities	Single – Factor : Face only or finger (using device)	Multi Factor Authentication (Face, finger, Voice, eyes & Palm)	Face : 1: N, 1:1 Match @ 26 ms in a 20 Million Records in cloud
Hardware Requirements	Fragmented hardware solutions: Specialised & Costly hardware , can't communicate instantaneously with global Databases	Mobile fist technology. Mobile Tablet/ IP Camera - Based, No additional Hardware needed WEB 3 Enabled	No Spares/inventory required Leverage Mobile Technology advancement
Cost and Accessibility	Expensive, Urban Centric, slow deployment	Affordable, grassroots-focused, leverages Mobiles/ tablets innovation	Leverage existing Infra (IP camera), individual's mobile
Security measures	Security vulnerability Basic encryption, no decentralised data OTP & Password dependent to complete end-to –end process	Decentralized Data security with AES 256 Encryption, data stored in customer's Cloud	Patented Technology - Distributed architecture for Multi-factor authentication, Local AI deployment –Online & Offline
Scalability	Limited scope, Expensive, Time consuming and difficult to upgrade/ replace	Empowering users: Highly Scalable across Diverse environment	Quick deployment via app , AI model works both Offline and Online, Deduplication check – on Device & in cloud



Mobile/Tablet



Face

Voice

Finger

Eye

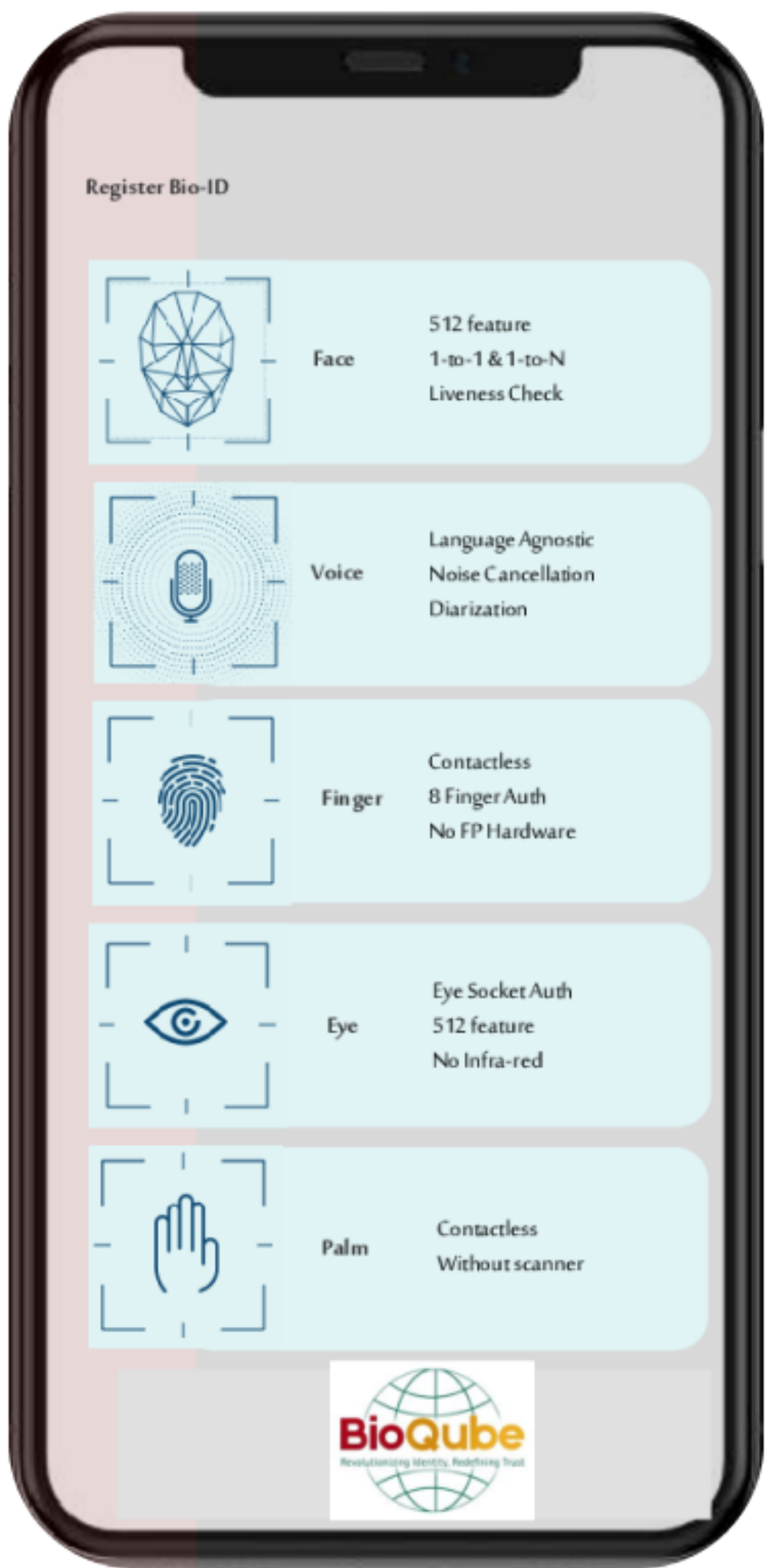
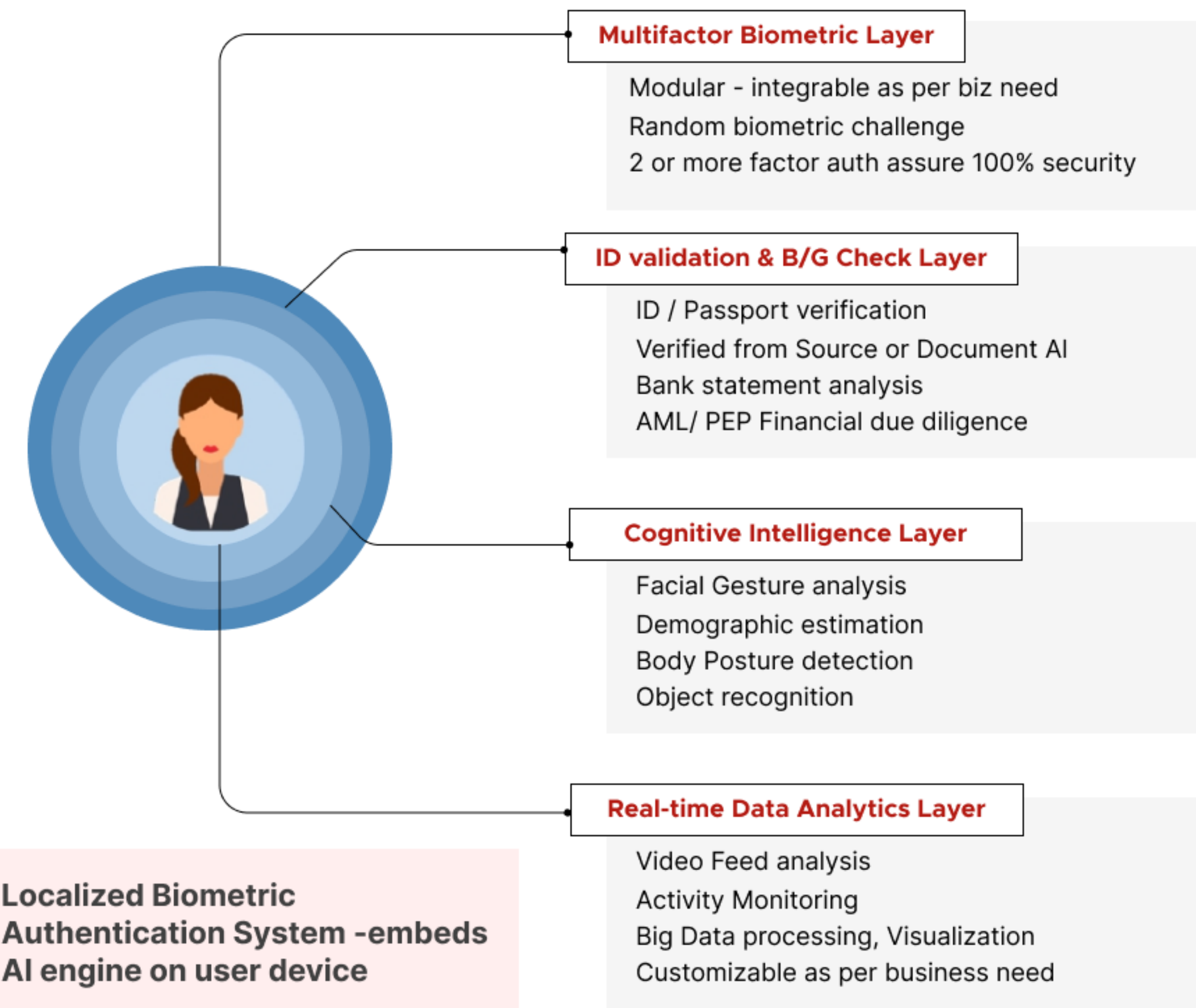
Palm



- Web3 Enabled
- Unique, Distributed Data Architecture

Core Technology

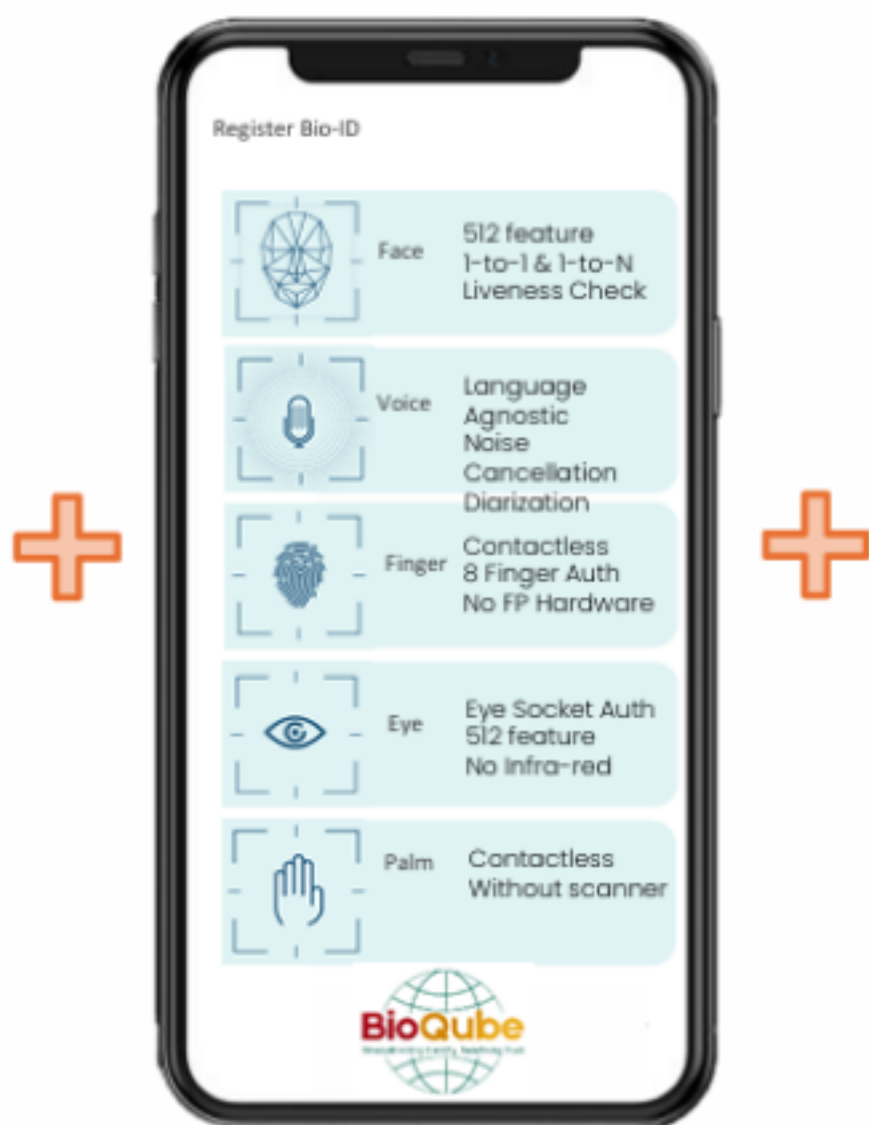
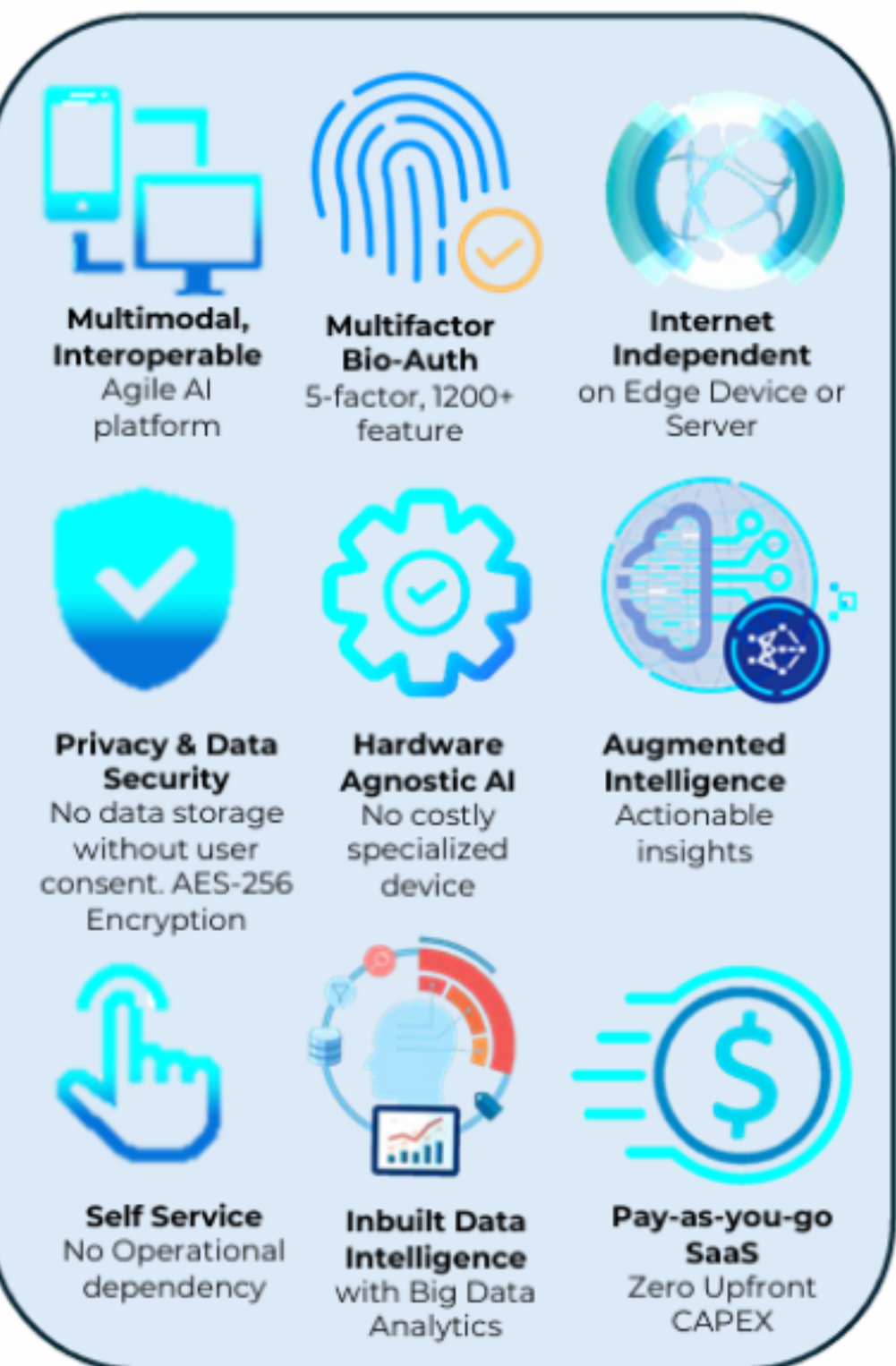
Your Biometric is your Identity, Web 3 Enabled
A Patented decentralized data architecture which reduces risk of hacking



Localized Biometric Authentication System -embeds AI engine on user device
+ 3 More applied

Solution Architecture

Deployable both
Offline & Online



No Specialised Hardware
Deployable using any mobile/tablet
+
Interpretable with legacy system
&
Military grade data protection
AES 256+decentralized data structure



Geo-Fenced

- Contact Less
- No Specialized Hardware



A seamless biometric-based travel solution enabling **secure, paperless, and hassle-free** airport journeys from registration to boarding.

Features That Ensure Trusted Identity and Fast Mobility



One-time Bio-Profile with Valid ID

Travelers create a secure digital ID on their phones by verifying documents and registering biometrics just once.



Boarding Pass QR Scan & Validate

Passengers scan their boarding pass, which gets auto-verified by matching it with their digital profile.



Counter Check-in & Baggage Drop

Passenger details appear instantly on the agent's screen, enabling quick baggage drop without repeated ID checks.



Lounge Access

Profile verification at lounges is seamless, eliminating queues and enabling personalized passenger experiences.



Dashboard-Based Easy Monitoring

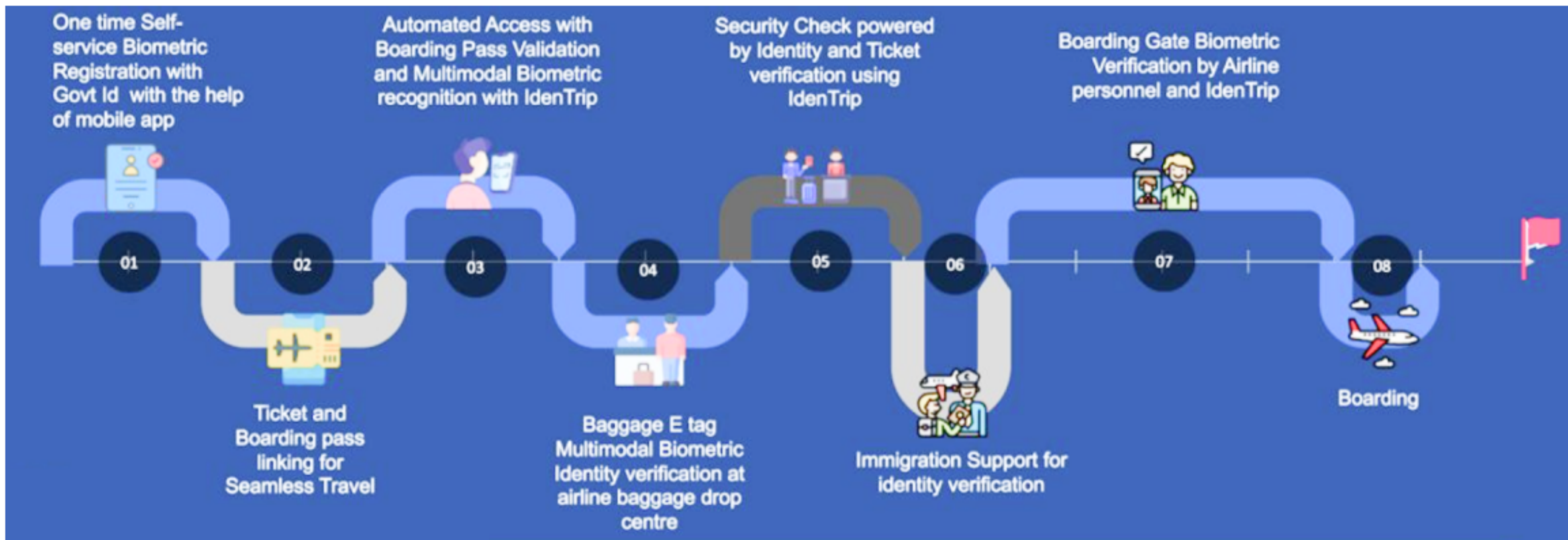
Security teams access real-time passenger data, speeding up checks and minimizing crowding.



Asset-Light, Minimum Infra SaaS Model

A software-driven model that cuts hardware use, reduces carbon footprint, and avoids capital expenses.

Smooth Paperless Passenger Journey with IDenTrip



Benefits To Travelers

MINIMUM WAITING

Travelers expect minimal wait times — under 5 minutes at terminal entry and under 10 minutes for security or immigration checks.



ENHANCED SECURITY

65% of passengers are willing to share personal data, trusting that automated immigration enhances both speed and safety.



FASTER PROCESS

70% of travelers are ready to share biometric information to accelerate airport procedures.



PAPERLESS, SELF-SERVICE

Nearly half of passengers prefer a fully digital experience — using smartphones and biometric IDs over paper-based processes.



New Dimensions Of Travel Experience
Bio-Enabled Entry To Boarding

Registration & Ticketing

Self Service Biometric Registration

One time ID Linking for easy verification

Ticket / Boarding pass linking for seamless travel

Automated Access

Automated Paperless Access

Identity verified seamless entry

Integrated Bio tagged thermal screening

Seamless check in

Multimodal Biometric Check in

Systematic Crowd Management

No specialized Infrastructure

Self service Baggage Drop

Baggage E tag on mobile

Scan and generate paper tag

Savings on cost and resource

Contactless Security check

Mobile/Tab based Passenger recognition

Hassle free and enhanced security

Real time alerts with decision support

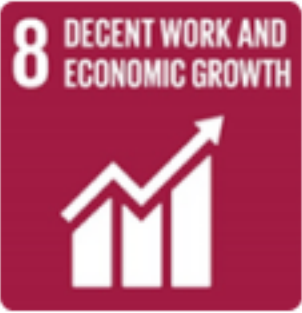
Zero Queue Boarding

Contactless & Tamperproof access

Persistent health screening

Easy integration with Airline database

Aligned with 9 UN SDG goals



Advisory Board

Steven Morgan
Ex-Global Head Tech Ops, Citibank

Capt. Harpreet Chadha
Advisory Board - California Sheriff Dept.

Anil Ahuja
Former Asia head of 3i

Rakesh Asthana
Former special director CBI, Director General BSF, Director General NCB

Himanshu Gulati
Member of Parliament, Norway

Brian Steven Hughes
VP- Active Security Consulting, Former President-Lupo Global Former Political Director for U.S. Congressional elections

Roll Stephane
Chairperson, African Union Economic Council

Rene BruelHart
Former President of the Board of Directors of the Financial Information Authority (AIF) of Vatican City

Ahmed Kassam
Advisory to NEPAD e-Africa Commission, UNDP, UNICEF, UNESCO, Commonwealth Biz Council, World Bank, WEF

Saumen Chakraborty
30Y exp. - IBM, Microsoft

Gaurav Dalmia
Chairman, Dalmia Holding